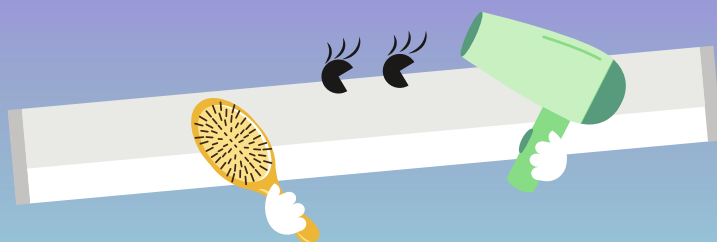


Elsa Vario Flex

LED Bathroom Mirror Luminaire



Splash resistant, practical and appealing at the same time, Elsa Vario Flex takes care of your looks

- FLEX Feature (Lumen switch): Decide on your lumen package per lumen switch directly on site for two sizes (450 mm and 600 mm)
- VARIO Feature (Colour temperature switch): 3000 K (warm white), 3500 K or 4000 K (neutral white)
- Colour Rendering ≥ 90 for your best look in front of the mirror
- Bathroom mirror luminaire with an elegant and timeless design
- Opal diffuser ensuring visual comfort and a fully homogeneous illumination
- Integrated on/off switch or sensor option (daylight & presence) available
- Tool-free wiring for quick installation



CCT switch (3000 K, 3500 K and 4000 K)



Lumen switch (2 sizes with switchable lumen packages)



High CRI for a more accurate and natural feel



IP44 splash resistant and IK08 rated impact resistance



Daylight and presence



50000 h lifetime before luminous flux is reduced to 70% of the initial value

Ideal for ...



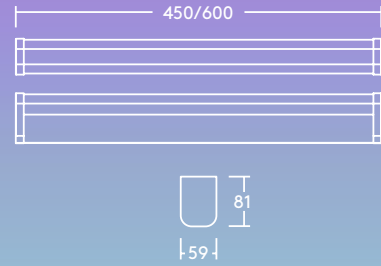
Sanitary rooms

Installation/Mounting

- Suitable for surface mounting
- Tool-free wiring with push terminal
- Sufficient space at the back of the batten for excess cable

Material/Finish

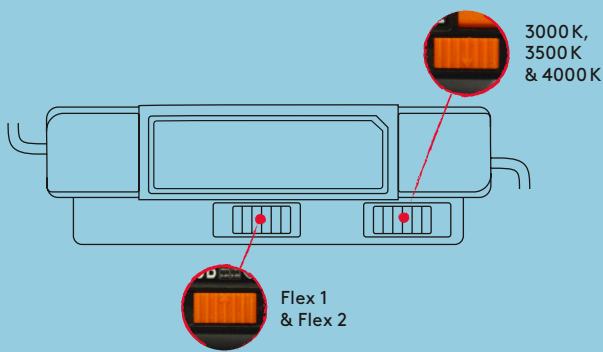
- Body: Aluminium, white finish (RAL 9016)
- Diffuser: PC, opal
- End cap: PC, white finish (RAL 9016)



Facilitating life

VARIO & FLEX Feature

There is no need to worry about lumen packages or colour temperatures anymore – it's always the same product that can be easily adapted for your needs onsite:



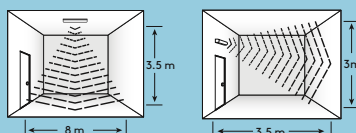
And of course your morning smile will be presented in the best light with $CRI \geq 90$ – no matter which colour temperature you choose.

Presence and daylight detection

Elsa Vario Flex's microwave sensor option will ensure that light is only delivered when needed. This sensor is a motion switch, which turns on the light on detection of movement, and turns off after a pre-selected hold-time when there are no people around. This leaves the luminaire with a clean finish, as no on/off switch is used. A daylight sensor is also built-in to prevent the light switching on when there is sufficient natural light.

Sensor range

at 100% sensitivity



Controllability (default)

📶 Sensitivity	25%, 50%, 75%, 100%
🕒 Time	10s, 1min, 5min, 10min, 15min, 20min, 25min, 30min
✳ lux	10lux, 20lux, 50lux, 100lux, 300lux, 500lux, disable

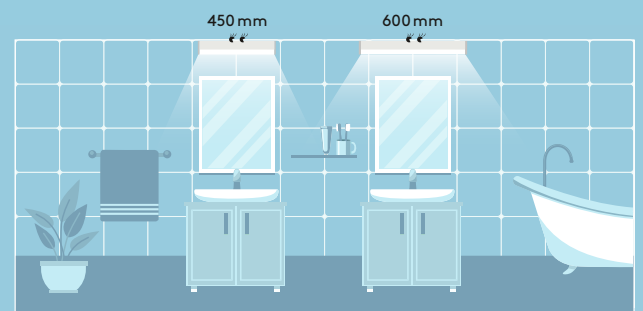
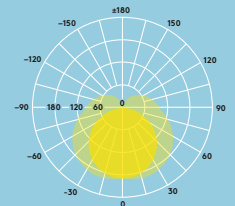
thorneco.com

Ordering guide

Description	SAP Code
ELSA VARIOFLEX 450 800 930/35/40	96635659
ELSA VARIOFLEX 450 800 930/35/40 MWS	96635660
ELSA VARIOFLEX 600 1200 930/35/40	96635661
ELSA VARIOFLEX 600 1200 930/35/40 MWS	96635662

MWS: microwave presence sensor

Portfolio overview



Light source information

- Flex @4000K: 450mm 600mm
- 800lm 1200lm
- 600lm 900lm
- Vario: 3000K, 3500K & 4000K
- Efficiency up to 100lm/W
- Life time 50000 hours (@L70, Ta 25°C)
- MacAdam (initial): 4
- CRI ≥ 90

Specification

- Class II electrical
- IP44
- IK08
- Ambient operating temperature: -20 to +40°C

