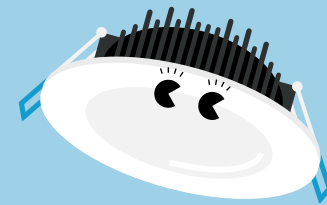


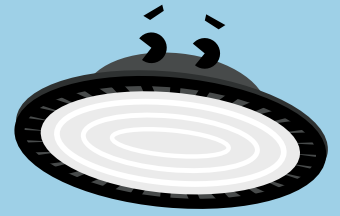
# Technical information



Description	Article no.	Datasheet	Photometry	Installation guide	RCM-Declaration
BARRY LED 600 2400 840	96 631 215	<a href="#">Datasheet</a>	<a href="#">Photometry</a>	<a href="#">Installation guide</a>	<a href="#">RCM-Declaration</a>
BARRY LED 1200 4000 840	96 630 490	<a href="#">Datasheet</a>	<a href="#">Photometry</a>	<a href="#">Installation guide</a>	<a href="#">RCM-Declaration</a>
BARRY LED 1500 6000 840	96 630 491	<a href="#">Datasheet</a>	<a href="#">Photometry</a>	<a href="#">Installation guide</a>	<a href="#">RCM-Declaration</a>
BARRY LED 1200 4000 865	96 631 439	<a href="#">Datasheet</a>	<a href="#">Photometry</a>	<a href="#">Installation guide</a>	<a href="#">RCM-Declaration</a>
BARRY LED 1500 6000 865	96 631 440	<a href="#">Datasheet</a>	<a href="#">Photometry</a>	<a href="#">Installation guide</a>	<a href="#">RCM-Declaration</a>
BARRY LED 600 2000 840 EL2	96 631 216	<a href="#">Datasheet</a>	<a href="#">Photometry</a>	<a href="#">Installation guide</a>	<a href="#">RCM-Declaration</a>
BARRY LED 1200 4000 840 EL2	96 630 492	<a href="#">Datasheet</a>	<a href="#">Photometry</a>	<a href="#">Installation guide</a>	<a href="#">RCM-Declaration</a>
BARRY LED 1500 6000 840 EL2	96 630 493	<a href="#">Datasheet</a>	<a href="#">Photometry</a>	<a href="#">Installation guide</a>	<a href="#">RCM-Declaration</a>
BARRY LED 1500 6000 865 EL2	96 631 441	<a href="#">Datasheet</a>	<a href="#">Photometry</a>	<a href="#">Installation guide</a>	<a href="#">RCM-Declaration</a>
CHLOE TC LED 90 800 830/42/57 DIM WH FP	96 631 233	<a href="#">Datasheet</a>	<a href="#">Photometry</a>	<a href="#">Installation guide</a>	<a href="#">RCM-Declaration</a>
CHLOE TC TRIM WH FLAT	96 631 234	<a href="#">Datasheet</a>		<a href="#">Installation guide</a>	
CHLOE TC TRIM SR REBATED	96 631 235	<a href="#">Datasheet</a>		<a href="#">Installation guide</a>	
CHLOE TC TRIM SR FLAT	96 631 236	<a href="#">Datasheet</a>		<a href="#">Installation guide</a>	
CHLOE TC TRIM BK REBATED	96 631 237	<a href="#">Datasheet</a>		<a href="#">Installation guide</a>	
CHLOE TC TRIM BK FLAT	96 631 238	<a href="#">Datasheet</a>		<a href="#">Installation guide</a>	
CHLOE LED 90 700 830 DIM WH FP	96 629 760	<a href="#">Datasheet</a>	<a href="#">Photometry</a>	<a href="#">Installation guide</a>	<a href="#">RCM-Declaration</a>
CHLOE LED 90 800 840 DIM WH FP	96 629 759	<a href="#">Datasheet</a>	<a href="#">Photometry</a>	<a href="#">Installation guide</a>	<a href="#">RCM-Declaration</a>
GEORGE LED 330 12000 840 FP	96 629 086	<a href="#">Datasheet</a>	<a href="#">Photometry</a>	<a href="#">Installation guide</a>	<a href="#">RCM-Declaration</a>
GEORGE LED 330 18000 840 FP	96 629 087	<a href="#">Datasheet</a>	<a href="#">Photometry</a>	<a href="#">Installation guide</a>	<a href="#">RCM-Declaration</a>
GEORGE LED 390 24000 840 FP	96 629 088	<a href="#">Datasheet</a>	<a href="#">Photometry</a>	<a href="#">Installation guide</a>	<a href="#">RCM-Declaration</a>
GEORGE LED 390 30000 840 FP	96 629 089	<a href="#">Datasheet</a>	<a href="#">Photometry</a>	<a href="#">Installation guide</a>	<a href="#">RCM-Declaration</a>
SET OF GEORGE STIRRUP S (6 pcs)	96 629 371	<a href="#">Datasheet</a>		<a href="#">Installation guide</a>	
SET OF GEORGE STIRRUP M (6 pcs)	96 629 372	<a href="#">Datasheet</a>		<a href="#">Installation guide</a>	
SET OF GEORGE STIRRUP L (6 pcs)	96 629 373	<a href="#">Datasheet</a>		<a href="#">Installation guide</a>	
JULIE 600 LED IP65 1200 865	96 628 549	<a href="#">Datasheet</a>	<a href="#">Photometry</a>	<a href="#">Installation guide</a>	<a href="#">RCM-Declaration</a>
JULIE 600 LED IP65 1800 840	96 628 548	<a href="#">Datasheet</a>	<a href="#">Photometry</a>	<a href="#">Installation guide</a>	<a href="#">RCM-Declaration</a>
JULIE 1200 LED IP65 4000 840	96 665 577	<a href="#">Datasheet</a>	<a href="#">Photometry</a>	<a href="#">Installation guide</a>	<a href="#">RCM-Declaration</a>
JULIE 1500 LED IP65 6000 840 COR MWS	96 630 236	<a href="#">Datasheet</a>	<a href="#">Photometry</a>	<a href="#">Installation guide</a>	<a href="#">RCM-Declaration</a>
JULIE 1200 LED IP65 4000 865	96 628 546	<a href="#">Datasheet</a>	<a href="#">Photometry</a>	<a href="#">Installation guide</a>	<a href="#">RCM-Declaration</a>
JULIE 1500 LED IP65 6000 840	96 665 580	<a href="#">Datasheet</a>	<a href="#">Photometry</a>	<a href="#">Installation guide</a>	<a href="#">RCM-Declaration</a>
JULIE 1500 LED IP65 6000 840 E3	96 665 582	<a href="#">Datasheet</a>	<a href="#">Photometry</a>	<a href="#">Installation guide</a>	<a href="#">RCM-Declaration</a>
JULIE 1500 LED IP65 6000 865	96 628 547	<a href="#">Datasheet</a>	<a href="#">Photometry</a>	<a href="#">Installation guide</a>	<a href="#">RCM-Declaration</a>
JULIE LED Spare Mount Kit	96 628 409	<a href="#">Datasheet</a>		<a href="#">Installation guide</a>	



# Technical information



LARA LED 250 800 840 WH	96 666 101	<a href="#">Datasheet</a>	<a href="#">Photometry</a>	<a href="#">Installation guide</a>	<a href="#">RCM-Declaration</a>
LARA LED 250 800 840 BLK	96 666 102	<a href="#">Datasheet</a>	<a href="#">Photometry</a>	<a href="#">Installation guide</a>	<a href="#">RCM-Declaration</a>
LARA LED 300 1200 840 WH	96 666 105	<a href="#">Datasheet</a>	<a href="#">Photometry</a>	<a href="#">Installation guide</a>	<a href="#">RCM-Declaration</a>
LARA LED 300 1200 840 BLK	96 666 106	<a href="#">Datasheet</a>	<a href="#">Photometry</a>	<a href="#">Installation guide</a>	<a href="#">RCM-Declaration</a>
LARA LED 300 1200 840 MWS WH	96 666 113	<a href="#">Datasheet</a>	<a href="#">Photometry</a>	<a href="#">Installation guide</a>	<a href="#">RCM-Declaration</a>
LARA LED 300 1200 840 WH E2 T/SWITCH	96 648 321	<a href="#">Datasheet</a>	<a href="#">Photometry</a>	<a href="#">Installation guide</a>	<a href="#">RCM-Declaration</a>
LARA LED 300 1200 840 BLK E2 T/SWITCH	96 648 322	<a href="#">Datasheet</a>	<a href="#">Photometry</a>	<a href="#">Installation guide</a>	<a href="#">RCM-Declaration</a>
LARA LED 330 2000 840 WH	96 629 752	<a href="#">Datasheet</a>	<a href="#">Photometry</a>	<a href="#">Installation guide</a>	<a href="#">RCM-Declaration</a>
LARA BEZEL TRIM SMALL 250 WH	96 666 121	<a href="#">Datasheet</a>		<a href="#">Installation guide</a>	
LARA BEZEL TRIM LARGE 300 WH	96 666 122	<a href="#">Datasheet</a>		<a href="#">Installation guide</a>	
LARA BEZEL TRIM SMALL 250 BLK	96 666 123	<a href="#">Datasheet</a>		<a href="#">Installation guide</a>	
LARA BEZEL TRIM LARGE 300 BLK	96 666 124	<a href="#">Datasheet</a>		<a href="#">Installation guide</a>	
LARA BEZEL TRIM LARGE 300 SIL	96 630 073	<a href="#">Datasheet</a>		<a href="#">Installation guide</a>	
LARA BEZEL TRIM X-LARGE 330 WH	96 630 071	<a href="#">Datasheet</a>		<a href="#">Installation guide</a>	
LARA BEZEL TRIM X-LARGE 330 SIL	96 630 072	<a href="#">Datasheet</a>		<a href="#">Installation guide</a>	
LARA EYELID TRIM LARGE 300 BLK	96 666 126	<a href="#">Datasheet</a>		<a href="#">Installation guide</a>	
LARA EYELID GRILLE TRIM LARGE 300 BLK	96 666 128	<a href="#">Datasheet</a>		<a href="#">Installation guide</a>	
LEO LED FL IP66 75W 840 PC	96 630 252	<a href="#">Datasheet</a>	<a href="#">Photometry</a>	<a href="#">Installation guide</a>	<a href="#">RCM-Declaration</a>
LEO LED FL IP66 100W 840 PC	96 630 253	<a href="#">Datasheet</a>	<a href="#">Photometry</a>	<a href="#">Installation guide</a>	<a href="#">RCM-Declaration</a>
LEO LED FL IP66 150W 840 PC	96 630 254	<a href="#">Datasheet</a>	<a href="#">Photometry</a>	<a href="#">Installation guide</a>	<a href="#">RCM-Declaration</a>
LEO LED FL IP66 200W 840 PC	96 630 255	<a href="#">Datasheet</a>	<a href="#">Photometry</a>	<a href="#">Installation guide</a>	<a href="#">RCM-Declaration</a>
LEONIE LED FL IP65 10W 840	96 630 335	<a href="#">Datasheet</a>	<a href="#">Photometry</a>	<a href="#">Installation guide</a>	<a href="#">RCM-Declaration</a>
LEONIE LED FL IP65 20W 840	96 630 336	<a href="#">Datasheet</a>	<a href="#">Photometry</a>	<a href="#">Installation guide</a>	<a href="#">RCM-Declaration</a>
LEONIE LED FL IP65 30W 840	96 630 337	<a href="#">Datasheet</a>	<a href="#">Photometry</a>	<a href="#">Installation guide</a>	<a href="#">RCM-Declaration</a>
LEONIE LED FL IP65 50W 840	96 630 338	<a href="#">Datasheet</a>	<a href="#">Photometry</a>	<a href="#">Installation guide</a>	<a href="#">RCM-Declaration</a>
LEONIE PLUG&PLAY MWS	96 630 339	<a href="#">Datasheet</a>	<a href="#">Photometry</a>	<a href="#">Installation guide</a>	
LUCY 600 LED IP66 2000 840 TW	96 630 331	<a href="#">Datasheet</a>	<a href="#">Photometry</a>	<a href="#">Installation guide</a>	
LUCY 1200 LED IP66 4000 840 TW	96 630 332	<a href="#">Datasheet</a>	<a href="#">Photometry</a>	<a href="#">Installation guide</a>	
LUCY 1500 LED IP66 6000 840 TW	96 630 333	<a href="#">Datasheet</a>	<a href="#">Photometry</a>	<a href="#">Installation guide</a>	
RUBY LED 1200x300 3200 840 FP	96 628 981	<a href="#">Datasheet</a>	<a href="#">Photometry</a>	<a href="#">Installation guide</a>	<a href="#">RCM-Declaration</a>
RUBY LED 1200x600 4500 840 FP	96 628 982	<a href="#">Datasheet</a>	<a href="#">Photometry</a>	<a href="#">Installation guide</a>	<a href="#">RCM-Declaration</a>
RUBY LED 600x600 3200 840 FP	96 631 071	<a href="#">Datasheet</a>	<a href="#">Photometry</a>	<a href="#">Installation guide</a>	<a href="#">RCM-Declaration</a>
RUBY LED 600x300 1800 840 FP	96 631 070	<a href="#">Datasheet</a>	<a href="#">Photometry</a>	<a href="#">Installation guide</a>	<a href="#">RCM-Declaration</a>
RUBY LED 1200 x 300 Suspension Kit	96 629 238	<a href="#">Datasheet</a>		<a href="#">Installation guide</a>	
RUBY LED 1200 x 600 Suspension Kit	96 629 085	<a href="#">Datasheet</a>		<a href="#">Installation guide</a>	

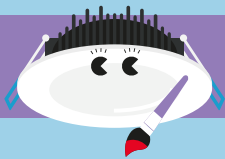


# Maximum loading of automatic circuit breakers



## Barry

SAP Code	Product Description	C10	C13	C16	C20	B10	B13	B16	B20
96630490	BARRY LED 1200 4000 840	12	16	19	24	12	16	19	24
96630491	BARRY LED 1500 6000 840	9	12	15	19	9	12	15	19
96631215	BARRY LED 600 2400 840	22	28	35	44	22	28	35	44
96631216	BARRY LED 600 2400 840 EL2	17	22	28	35	17	22	28	35
96631439	BARRY LED 1200 4000 865	12	16	19	24	12	16	19	24
96631440	BARRY LED 1500 6000 865	9	12	15	19	9	12	15	19
96630492	BARRY LED 1200 4000 840 EL2	8	11	13	17	8	11	13	17
96630493	BARRY LED 1500 6000 840 EL2	8	11	13	17	8	11	13	17
96631441	BARRY LED 1500 6000 865 EL2	8	11	13	17	8	11	13	17



## Chloe

SAP Code	Product Description	C10	C13	C16	C20	B10	B13	B16	B20
96631233	CHLOE TC LED 90 800 830/42/57 DIM WH FP	25	25	25	25	-	-	-	-
96629760	CHLOE LED 90 700 830 DIM WH FP	25	25	25	25	-	-	-	-
96629759	CHLOE LED 90 800 840 DIM WH FP	25	25	25	25	25	25	25	25



## George

SAP Code	Product Description	C10	C13	C16	C20	C25	B10	B13	B16	B20	B25
96629086	GEORGE LED 330 12000 840 FP	17	22	22	34	43	8	8	13	17	21
96629087	GEORGE LED 330 18000 840 FP	5	6	6	10	12	2	2	4	5	6
96629088	GEORGE LED 390 24000 840 FP	5	6	6	10	12	2	2	4	5	6
96629089	GEORGE LED 390 30000 840 FP	3	4	4	7	9	1	1	3	3	4

# Maximum loading of automatic circuit breakers



## Julie

SAP Code	Product Description	C10	C13	C16	C20	B10	B13	B16	B20
96628549	JULIE 600 LED IP65 1200 865	47	61	76	9	47	61	76	9
96628548	JULIE 600 LED IP65 1800 840	22	28	35	44	21	26	33	41
96665577	JULIE 1200 LED IP65 4000 840	20	27	33	41	18	24	30	37
96628546	JULIE 1200 LED IP65 4000 865	12	16	20	29	20	27	33	40
96665580	JULIE 1500 LED IP65 6000 840	8	10	13	16	7	8	10	12
96628547	JULIE 1500 LED IP65 6000 865	11	14	17	27	18	25	31	38
96630236	JULIE 1500 LED IP65 6000 840 COR MWS	8	10	13	16	7	8	10	12
96665582	JULIE 1500 LED IP65 6000 840 E3	7	10	12	15	6	8	9	11
96631130	JULIE 1500 LED IP65 6000 865 E3	7	10	12	15	6	8	9	11



## Lara

SAP Code	Product Description	C10	C13	C16	C20	B10	B13	B16	B20
96666101	LARA LED 250 800 840 WH	93	121	153	187	56	72	90	112
96666102	LARA LED 250 800 840 BLK	93	121	153	187	56	72	90	112
96666105	LARA LED 300 1200 840 WH	93	121	153	187	56	72	90	112
96666106	LARA LED 300 1200 840 BLK	93	121	153	187	56	72	90	112
96666113	LARA LED 300 1200 840 MWS	93	121	153	187	56	72	90	112
96648321	LARA LED 300 1200 840 WH E2 T/SWITCH	93	121	153	187	56	72	90	112
96648322	LARA LED 300 1200 840 BLK E2 T/SWITCH	93	121	153	187	56	72	90	112
96629752	LARA LED 330 2000 840 WH	70	90	110	140	65	85	105	130



## Leo

SAP Code	Product Description	C10	C13	C16	C20	B10	B13	B16	B20
96630252	LEO LED FL IP66 75W 840 PC	26	34	42	54	13	17	21	27
96630253	LEO LED FL IP66 100W 840 PC	8	12	16	20	4	6	8	10
96630254	LEO LED FL IP66 150W 840 PC	6	8	10	12	3	4	5	6
96630255	LEO LED FL IP66 200W 840 PC	4	6	8	10	2	3	4	5

# Maximum loading of automatic circuit breakers



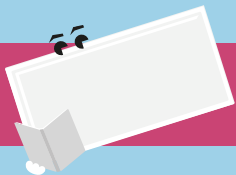
## Leonie

SAP Code	Product Description	C10	C13	C16	C20	B10	B13	B16	B20
96630335	LEONIE LED FL IP65 10W 840	147	190	234	354	73	95	117	147
96630336	LEONIE LED FL IP65 20W 840	176	228	280	352	88	114	140	176
96630337	LEONIE LED FL IP65 30W 840	116	140	186	234	58	70	93	117
96630338	LEONIE LED FL IP65 50W 840	70	90	112	140	35	45	56	70



## Lucy

SAP Code	Product Description	C10	C13	C16	C20	B10	B13	B16	B20
96630331	LUCY 600 LED IP66 2000 840 TW	37	56	68	83	37	56	68	83
96630332	LUCY 1200 LED IP66 4000 840 TW	18	28	34	41	18	28	34	41
96630333	LUCY 1500 LED IP66 6000 840 TW	7	11	13	16	7	11	13	16



## Ruby

SAP Code	Product Description	C10	C13	C16	C20	B10	B13	B16	B20
96628981	RUBY LED 1200x300 3200 840 FP	50	65	80	100	30	39	48	60
96628982	RUBY LED 1200x600 4500 840 FP	32	42	51	64	19	25	31	39
96631070	RUBY LED 600x300 1800 840 FP	88	114	141	176	53	69	85	106
96631071	RUBY LED 600x600 3200 840 FP	50	65	80	100	30	39	48	60